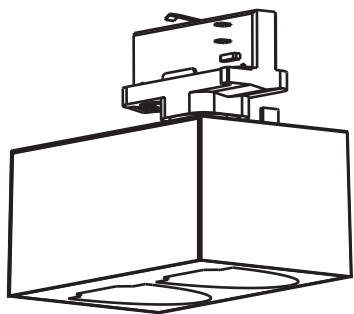


INSTALLATION INSTRUCTIONS

Xul LED Wall Washer



To customers:

- Thank you for choosing our products !
 - Please read this instruction carefully before using the product.
- This manual should be retained for the future reference.

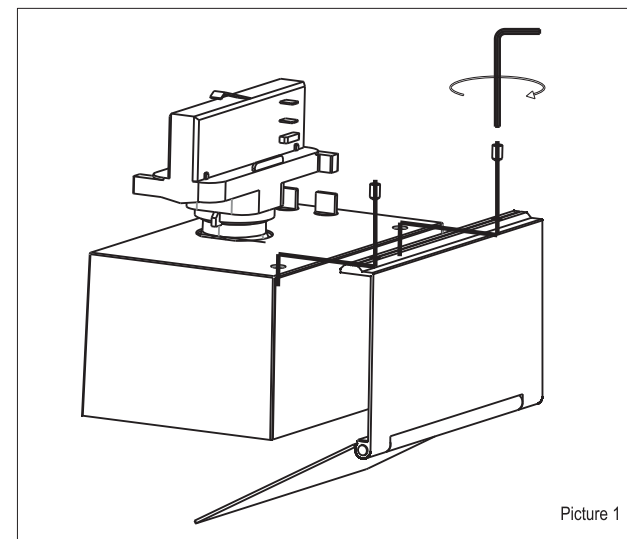
Please confirm the following important matters before starting each work, in order to ensure safe construction!			
If there is any problems with the product, please turn off the power supply and please consult our agent or ask qualified electrician.			
Warning: Wrong using may cause accidents. Caution: Incorrect using may cause damage.			
Before Installation	Warning	Forbidden to use	<p>This product is widely used in indoor application only and it cannot be used under the following environmental conditions. (Risk of Drop, Risk of Electric Shock, Risk of Fire)</p> <ul style="list-style-type: none"> Where ambient temperature is under -10°C or above 45°C Where humidity > 80%PH Where air conditioner or air outlet exist Where ceilings that cannot bear the weight of fixture Where inclined and uneven ceiling exist Where fixture is exposed to direct sunlight Where dust and corrosive gas exist Where vibration and shock exist Where building insulation may be present in normal use <p>Please contact Customers Service Team, once use environment cannot be confirmed to be applicable or not.</p>
During Installation	Warning	To be carried out	<ul style="list-style-type: none"> The fixture should be installed by a electrician with relevant qualification certificate. (Risk of Safety Accident) Do not exceed the a ccess voltage: 220-240V, frequency 50/60Hz. The lighting circuit should be wired separately, compared with other power lines, such as air conditioners or high-power electric equipments. Please make sure the power is switched off before installation or maintenance. And it's switched on only after correct wiring. (Risk of Electric Shock). Don't disassemble or retrofit the fixture. (Risk of Electric Shock, Risk of Fire, Risk of Drop, Risk of Failure). Don't touch the fixture when it is working or in a high temperature condition, when fixture just went out (Risk of Burning). Don't operate by wet hands(Risk of Electric Shock).
	Caution	To be carried out	<ul style="list-style-type: none"> The actual power is between 90%~110% from the rated power, (The load current carrying capacity of the wire should be considered in construction wiring). The force bearing point of installation in the ceiling board must be 4 times higher than the fixture weight. (Risk of Drop or Damage) The fire regulations must be observed, when fixture is working. (Risk of Fire) Non-user replaceable light source: Light source of the fixture can only be replaced by manufacturer or specialized persons. Please cut off the power supply immediately, if smoke or odor occur, then contact the electrical contractor. (Risk of Fire)

HUIZHOU CDN INDUSTRIAL DEVELOPMENT CO.,LTD.

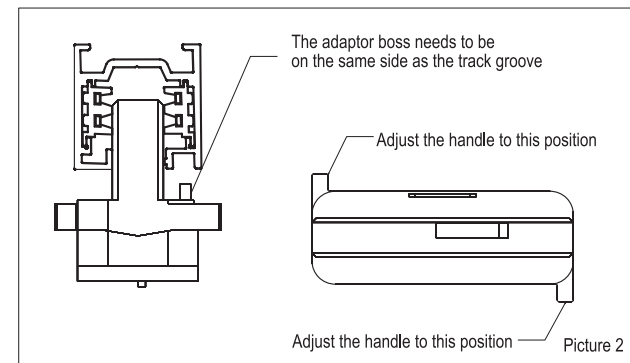
No.A17,Xianghe West Rd., Dongjiang Ind.Zone,Shuikou, Huizhou, Guangdong, China
<http://www.mayalit.com>

Installation instructions:

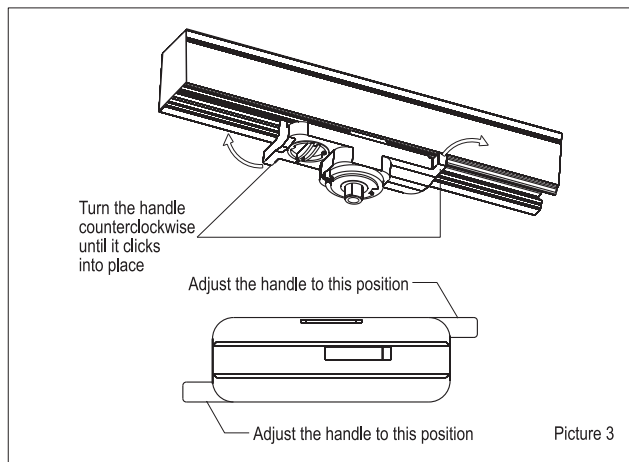
1. This product is equipped with Mayalit brand tracks or other compatible tracks, parameters and input voltage: AC220-240V, MAX carrying current 16A;
2. Determine the installation plan,ensuring that there is sufficient minimum space and that it does not affect the support beams, water pipes, and other facilities of the house;
3. The light does not come with a Shielding plate and needs to be purchased separately and installed, as shown in Picture 1;



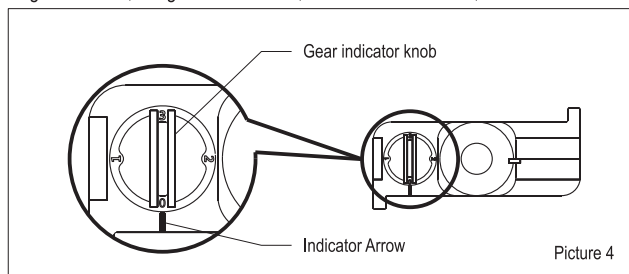
4. Before installation, please adjust the handle to the position shown in the diagram, and then push the adaptor into the track according to the position shown in the diagram, as shown in Picture 2;



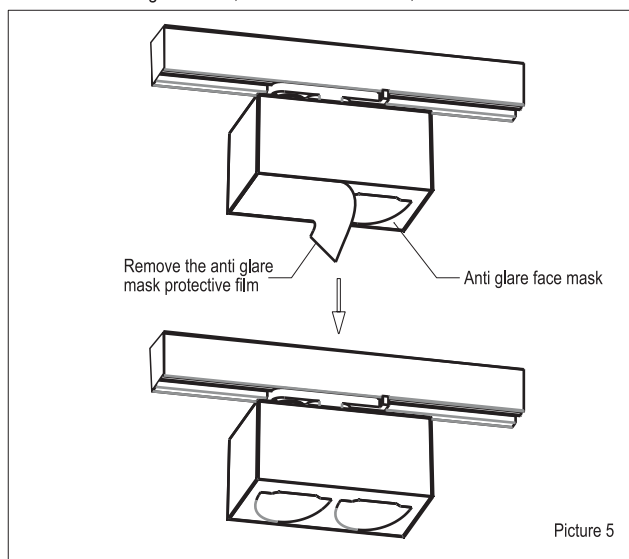
5. Rotate the handle counterclockwise to the clamping position, as shown in Picture 3;



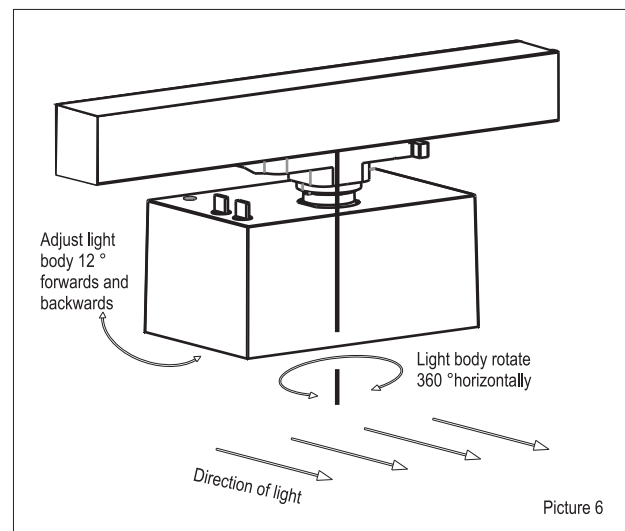
6. Adjust the gear indicator knob, when the indicator arrow is aligned with the gear number, the gear is turned on, as shown in Picture 4;



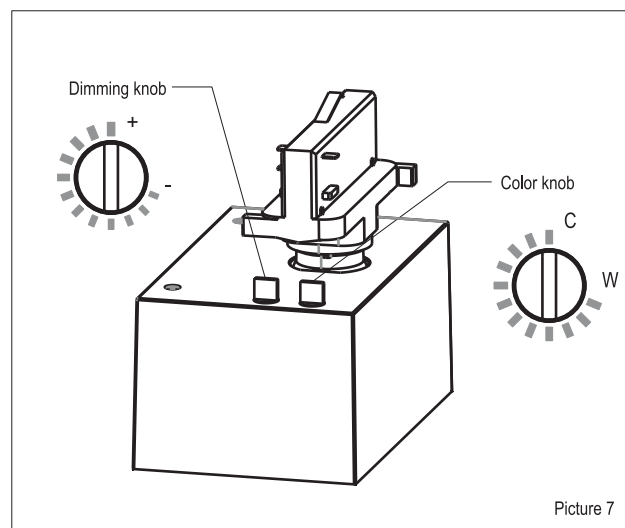
7. After installing the lighting fixtures, it is necessary to remove the protective film on the anti glare mask, as shown in Picture 5;



8. After the installation of the light, the lamp body can rotate 360 °horizontally and adjust 12 ° forwards and backwards vertically, as shown in Picture 6;



9. Rotate the dimming knob and color adjustment knob to adjust the brightness and color temperature of the lamp as needed, as shown in Picture 7;
The brightness adjustment range is 0% -100%;
Color temperature adjustment range: 2500K-5000K (optional version)



10. When disassembling the light from the track, first pry the handle to the position shown in the diagram, and then remove the light, as shown in Picture 8;

