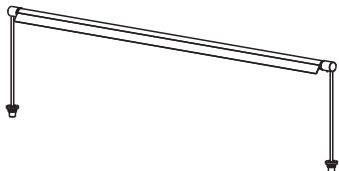


# Mayalit

## INSTALLATION INSTRUCTIONS

### Cimi Showcase Spotlight



#### To customers:

- Thank you for choosing our products !
- Please read this instruction carefully before using the product.
- This manual should be retained for the future reference.

**Please confirm the following important matters before starting each work, in order to ensure safe construction!**  
**If there is any problems with the product, please turn off the power supply and please consult our agent or ask qualified electrician.**

**⚠ Warning: Wrong using may cause accidents.**

**⚠ Caution: Incorrect using may cause damage.**

Before Installation	⚠ Warning	Forbidden to use	<p>This product is widely used in indoor application only and it cannot be used under the following environmental conditions. (Risk of Drop, Risk of Electric Shock, Risk of Fire)</p> <ul style="list-style-type: none"> <li>● Where ambient temperature is under -10°C or above 40°C</li> <li>● Where air conditioner or air outlet exist</li> <li>● Where ceilings that cannot bear the weight of fixture</li> <li>● Where inclined and uneven ceiling exist</li> <li>● Where fixture is exposed to direct sunlight</li> <li>● Where dust and corrosive gas exist</li> <li>● Where vibration and shock exist</li> <li>● Outdoor Application ● Wet place where humidity is of ≥80% PH</li> <li>● Where building insulation may be present in normal use</li> </ul> <p>Please contact Customers Service Team, once use environment cannot be confirmed to be applicable or not.</p>
During Installation	⚠ Warning	To be carried out	<ul style="list-style-type: none"> <li>● The fixture should be installed by a electrician with relevant qualification certificate. (Risk of Safety Accident)</li> <li>● The daylight needs an external LED power driver, and the power of the LED power driver should match the light source. (recommended Use the company's corresponding LED power drive, otherwise it will affect the normal use of the lamp).</li> <li>● The lighting circuit should be wired separately, compared with other power. (In such as air conditioners or high-power electric equipments.</li> <li>● Please make sure the power is switched off before installation or maintenance. And its switched on only after correct wiring.</li> <li>● (Risk of Electric Shock) ● Be sure that The minimum distance from side of the luminaire to surroundings must be more than 100mm.</li> <li>● Don't disassemble or retrofit the fixture. (Risk of Electric Shock, Risk of Fire, Risk of Drop, Risk of Failure).</li> <li>● Don't touch the fixture when it is working or in a high temperature condition when fixture just went out (Risk of Burning).</li> <li>● Don't operate by wet hands (Risk of Electric Shock).</li> <li>● Type Z attachment method of attachment such that the flexible cable or cord cannot be replaced without destroying the integrity of the accessory.</li> </ul>
	⚠ Caution	To be carried out	<ul style="list-style-type: none"> <li>● The actual power is between 90%~110% from the rated power. (The load current carrying capacity of the wire should be considered in construction wiring)</li> <li>● The force bearing point of installation in the ceiling board must be 4 times higher than the fixture weight (Risk of Drop or Damage)</li> <li>● The fire regulations must be observed when fixture is working. (Risk of Fire)</li> <li>● Non replaceable light source: Light source of this fixture is not replaceable. When the light source reaches its end, the entire fixture should be replaced.</li> <li>● Please cut off the power supply immediately if smoke or odor occur , then contact the electrical contractor. (Risk of Fire)</li> </ul>

#### HUIZHOU CDN INDUSTRIAL DEVELOPMENT CO.,LTD.

No.A17,Xianghe West Rd., Dongjiang Ind.Zone, Shuikou, Huizhou, Guangdong, China  
<http://www.mayalit.com>

## Lighting Fixture Installation Instructions

### 1. Mounting thickness & bore size (Figure 1)

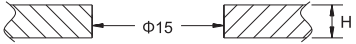
			
Mounting Method	Mounting Thickness(H)	Bore Size	
Clip Mounting	1~16mm	Φ15±0.5mm	
Threaded Mounting	> 5mm	Φ15±0.5mm	

Figure 1

### 2. The spacing dimensions for lamp openings are shown in Figure 2.

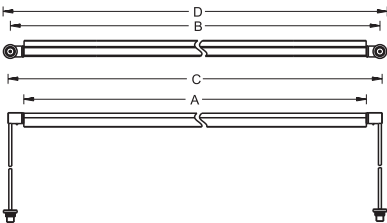
				
Product model	Light-emitting surface	Hole spacing	Lamp total length	Edge total length
MCG0110	500	551	560	579
MCG0115	666	717	726	745
MCG0117	833	884	893	912
MCG0120	1000	1051	1060	1079
MCG0127	1333	1384	1393	1412

Figure 2

### Installation Method 1 (Nut Installation)

First, remove the fixture's fixing assembly. Thread the fixture through the pre-cut hole, then tighten the nut to secure (Figure 3).

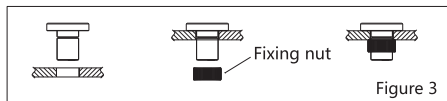


Figure 3

### Installation Method 2 (Screw Installation)

1. Remove the fixture's fixing assembly. Unscrew the end cap from the assembly, pass the assembly through the installation hole, secure it to the mounting surface with two screws, and finally screw the end cap back into place (Figure 3).

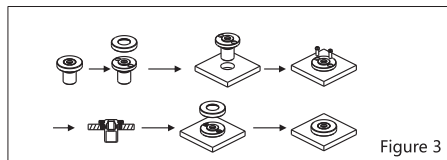


Figure 3

2. Screw the light pole into the lamp cover in sequence. Loosen the screws on the lamp cover to adjust the light projection direction of the fixture. After adjustment, securely tighten the screws, as shown in Figure 4.

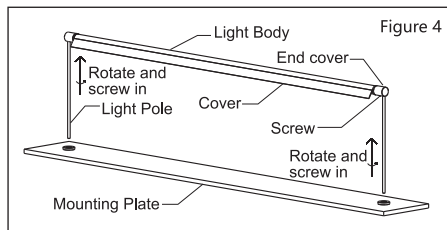


Figure 4

3. Thread the fixture's input wires and light pole through the holes of the mounting assembly in sequence, as illustrated in Figure 5.

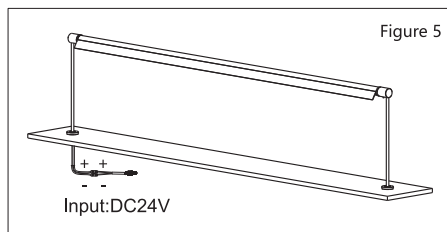


Figure 5