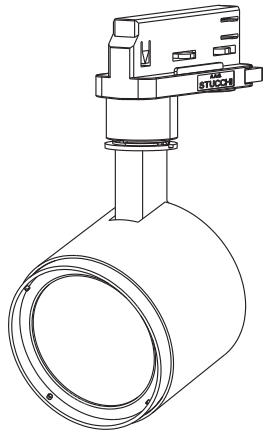


INSTALLATION INSTRUCTIONS

Ajaw Track Spotlight



To customers:

- Thank you for choosing our products !
- Please read this instruction carefully before using the product.
- This manual should be retained for the future reference.

<p>Please confirm the following important matters before starting each work, in order to ensure safe construction!</p> <p>If there is any problems with the product, please turn off the power supply and please consult our agent or ask qualified electrician.</p>			
<p>Warning: Wrong using may cause accidents.</p> <p>Caution: Incorrect using may cause damage.</p>			
Before Installation	Warning	Forbidden to use	<p>This product is widely used in indoor application only and it cannot be used under the following environmental conditions. (Risk of Drop, Risk of Electric Shock, Risk of Fire)</p> <ul style="list-style-type: none"> Where ambient temperature is under -10°C or above 45°C Where humidity > 80%PH Where air conditioner or air outlet exist Where ceilings that cannot bear the weight of fixture Where inclined and uneven ceiling exist Where fixture is exposed to direct sunlight Where dust and corrosive gas exist Where vibration and shock exist Where building insulation may be present in normal use <p>Please contact Customers Service Team, once use environment cannot be confirmed to be applicable or not.</p>
During Installation	Warning	To be carried out	<ul style="list-style-type: none"> The fixture should be installed by a electrician with relevant qualification certificate. (Risk of Safety Accident) Do not exceed the a ccess voltage: 220-240V, frequency 50/60Hz. The lighting circuit should be wired separately, compared with other power lines, such as air conditioners or high-power electric equipments. Please make sure the power is switched off before installation or maintenance. And it's switched on only after correct wiring. (Risk of Electric Shock). Don't disassemble or retrofit the fixture. (Risk of Electric Shock, Risk of Fire, Risk of Drop, Risk of Failure). Don't touch the fixture when it is working or in a high temperature condition, when fixture just went out (Risk of Burning). Don't operate by wet hands(Risk of Electric Shock).
	Caution	To be carried out	<ul style="list-style-type: none"> The actual power is between 90%~110% from the rated power, (The load current carrying capacity of the wire should be considered in construction wiring). The force bearing point of installation in the ceiling board must be 4 times higher than the fixture weight. (Risk of Drop or Damage) The fire regulations must be observed, when fixture is working, (Risk of Fire) Non-user replaceable light source: Light source of the fixture can only be replaced by manufacturer or specialized persons. Please cut off the power supply immediately, if smoke or odor occur, then contact the electrical contractor. (Risk of Fire)

HUIZHOU CDN INDUSTRIAL DEVELOPMENT CO.,LTD.

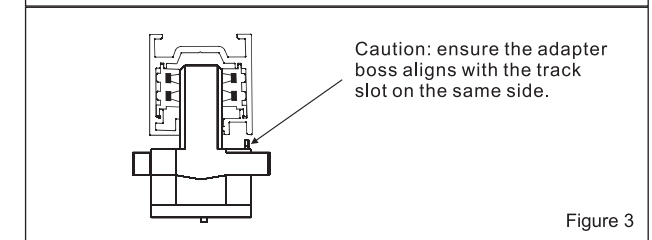
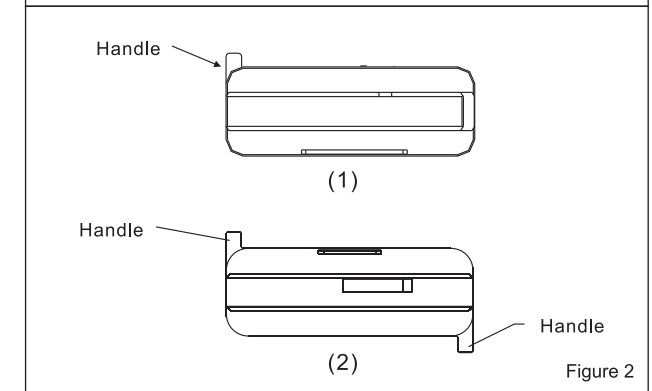
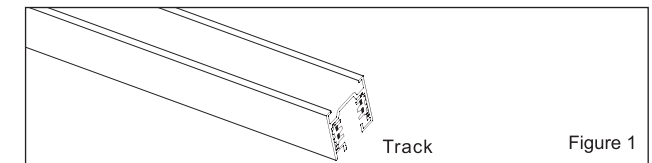
No.A17,Xianghe West Rd., Dongjiang Ind.Zone,Shuikou, Huizhou, Guangdong, China
<http://www.mayalit.com>

Note: An optical module front ring must be purchased separately for this product, the corresponding optical module models for different angles are as follows:

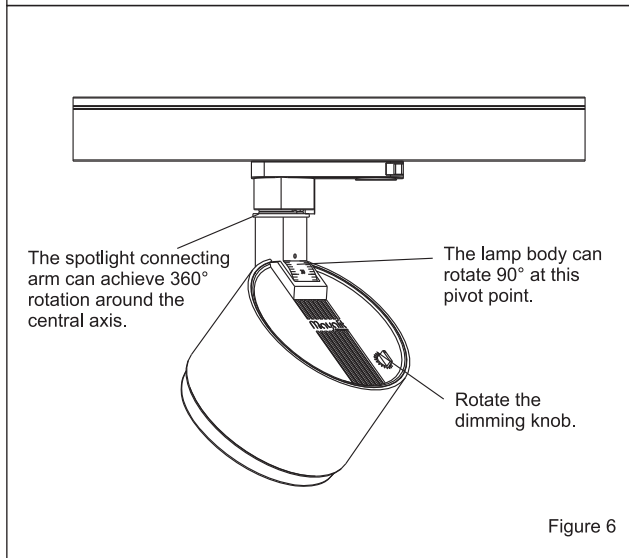
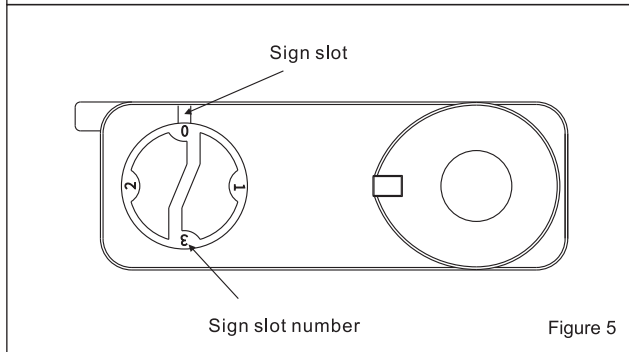
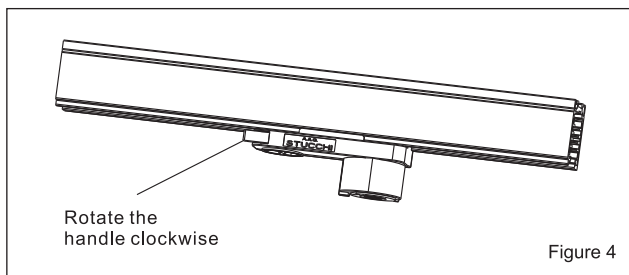
	6°	9°	15°	22°	30°	45°	16X60°	WALLWASH
MAL40412-III			MA312-15	MA312-22	MA312-30	MA312-45	MA312-EV	MA312-WW
MAL40414-III	MA314-6	MA314-9						
MAL40820-III			MA320-15	MA320-22	MA320-30	MA320-45	MA320-EV	MA320-WW
MAL40724-III	MA324-6	MA324-9						
MAL41230-III								
MAL41640-III			MA348-15	MA348-22	MA348-30	MA348-45	MA348-EV	MA348-WW
MAL41648-III								

Installation instructions:

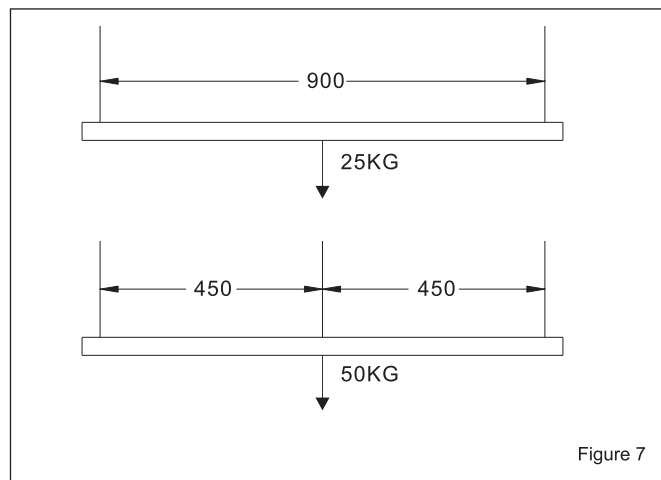
1. This product is compatible with Mayalit brand track (Fig.1) or other compatible rails from third-party manufacturers.track parameters: input voltage:AC 220-240V; Max current: 16A; Max load: 3680W.
2. Confirm the installation plan, ensuring sufficient space and no interference with building structures.
3. Before installation , adjust the handle to the position shown in (Fig.2) prior to installation.
4. Align the Protruding ribs on the side of the connector with the corresponding grooves on the track.Push the connector into the track slot (Fig.3).



5. Rotate the handle clockwise to the locked position (Figure 4).
6. Adjust the gear adjustment knob. When the indicator arrow aligns with a number, the corresponding gear is engaged (Figure 5).
7. After installation, the light body can be rotated 360° horizontally and 90° vertically (Figure 6).
8. Rotate the dimming knob to adjust the brightness of the light as needed, with a dimming range of 4% to 100% (Figure 6).

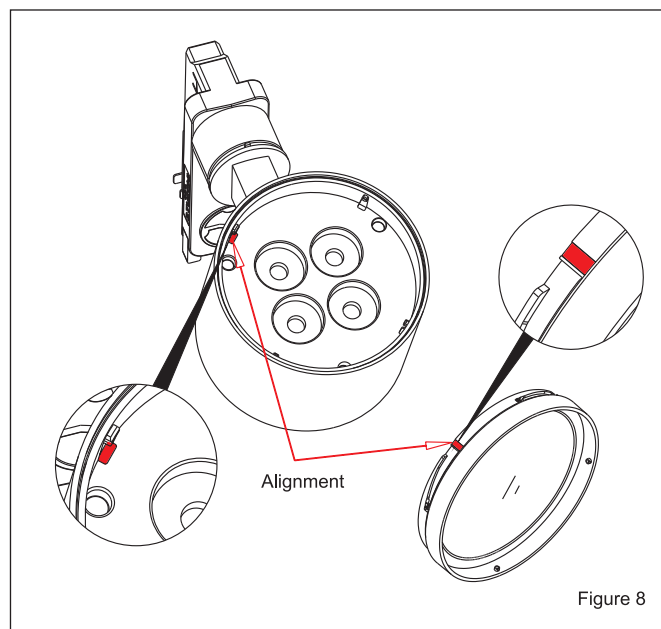


9. Load capacity chart (Figure 7).

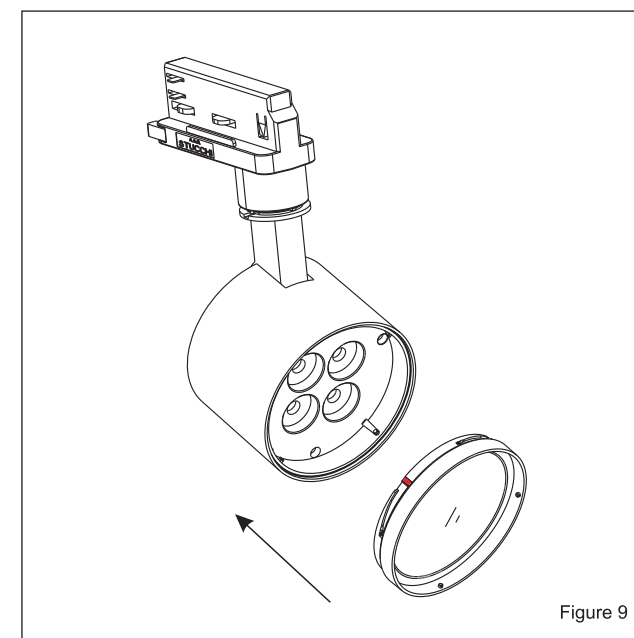


Translation of optical component installation instructions

1. Align the red silicone strip on the optical module with the red silicone block at the fixture's locking point (Figure 8).



2. After alignment, install the optical module into the spotlight.



3. Rotate the optical module clockwise to tighten it with the light fixture until a slight "click" sound is heard, indicating the installation is complete.

